

# CIVIL

## First Coast Railroad - Chester Road Crossing Improvements, Yulee, Florida

Client: Nassau County Board of County Commissioners

Service Provided: Permitting & Coordination

Value: \$ 240,000

Start/Completion: 2010 -2011



- First Coast Railroad (FCR) operates the rail services in Nassau County Florida. CSX owns the rail, however FCR runs and maintains the system. McCranie & Associates (M&A) was hired by PBS&J to handle the permitting and coordination for the improvements of the Chester Road crossing, in Yulee Florida. McCranie & Associates worked closely with representatives of FCR and Nassau County in order to obtain approval to widen Chester Road, as it crosses the rail line. McCranie & Associates drafted the agreement and presented the agreement to both parties for initial comments. M&A then compiled all comments into the final construction agreement, which was successfully approved by both the FCR attorneys and the Nassau County Board of County Commissioners.

# CIVIL

## Nassau County Judicial Complex - Yulee, Florida

Client: Nassau County Board of County Commissioners

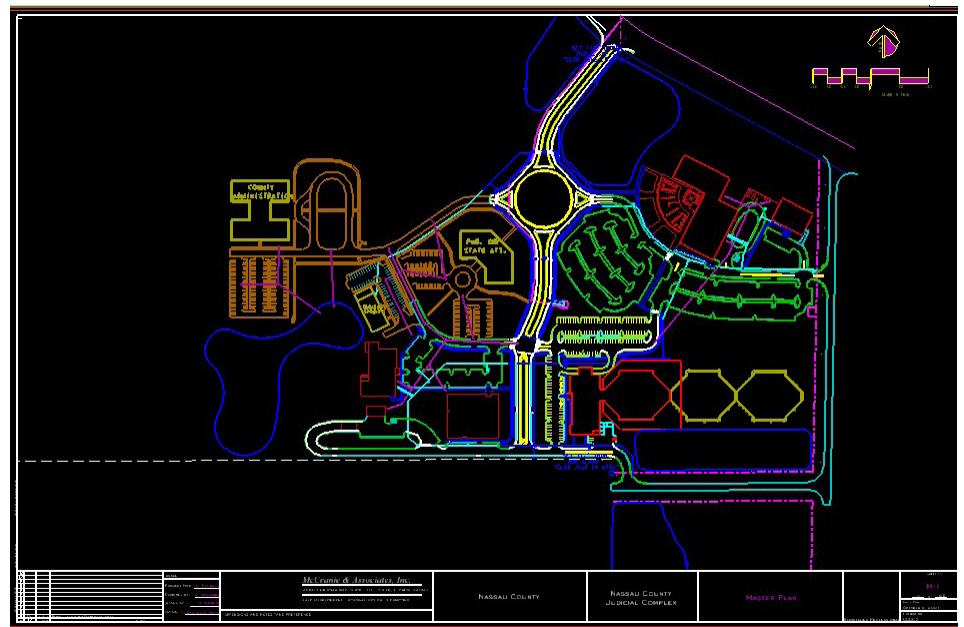
Services Provided: Master Planning, Design, Permitting and Public Meetings

Value: \$ 32,000,000

Start/Completion: 2000-2005



McCranie & Associates was selected by the Nassau County Board of County Commissioners to master plan, design and permit the Nassau County Judicial Complex. This 160 acre County Complex is the current site of the County Jail, the County Courthouse, the Emergency Operations Center and the County Records Building. McCranie & Associates was selected in 2000. The design was completed in December 2001, with construction beginning in mid 2002.



# CIVIL

## Miami Intermodal Center - FDOT District 6

Client: FDOT District 6

Services Provided: PD&E study

Value: \$ 2.0 billion

Start/Completion: 1998 - 2014



McCranie & Associates' staff designed and prepared plan and profile drawings for the entire roadway project. The Interconnector is a 6.2-kilometer expressway connection between SR 836 south of Miami International Airport and the terminus of SR 112 north of Miami International Airport (MIA). There are three multi-level interchanges. Interchanges on the interconnector occur at SR 836, Central Boulevard and at SR 112. The Central Boulevard interchange will provide access between MIA and the Interconnector and has involved significant coordination with the Dade County Aviation Department. Also, designed and prepared the hydraulic report for the entire MIC project.



Le Jeune Road South with MIA and MIC Access Ramps



MIAMI INTERMODAL CENTER



# CIVIL

Daytona State College - Daytona Beach, Fl.

Client: Daytona State College

Services Provided: Parking lot design, permitting.

Value: \$ 2,300,000

Start/Completion: 2009 - 2010



McCranie & Associates' staff designed and permitted the parking expansion and circulation plan to serve the College. Responsibilities include design of multiple parking lot facilities, design of storm sewer system, design of water and sewer system, plans production, permitting and construction administration.



# CIVIL

Hampton Lakes (Amelia Walk) PUD. Yulee, Fl.

Client: Woodside Homes

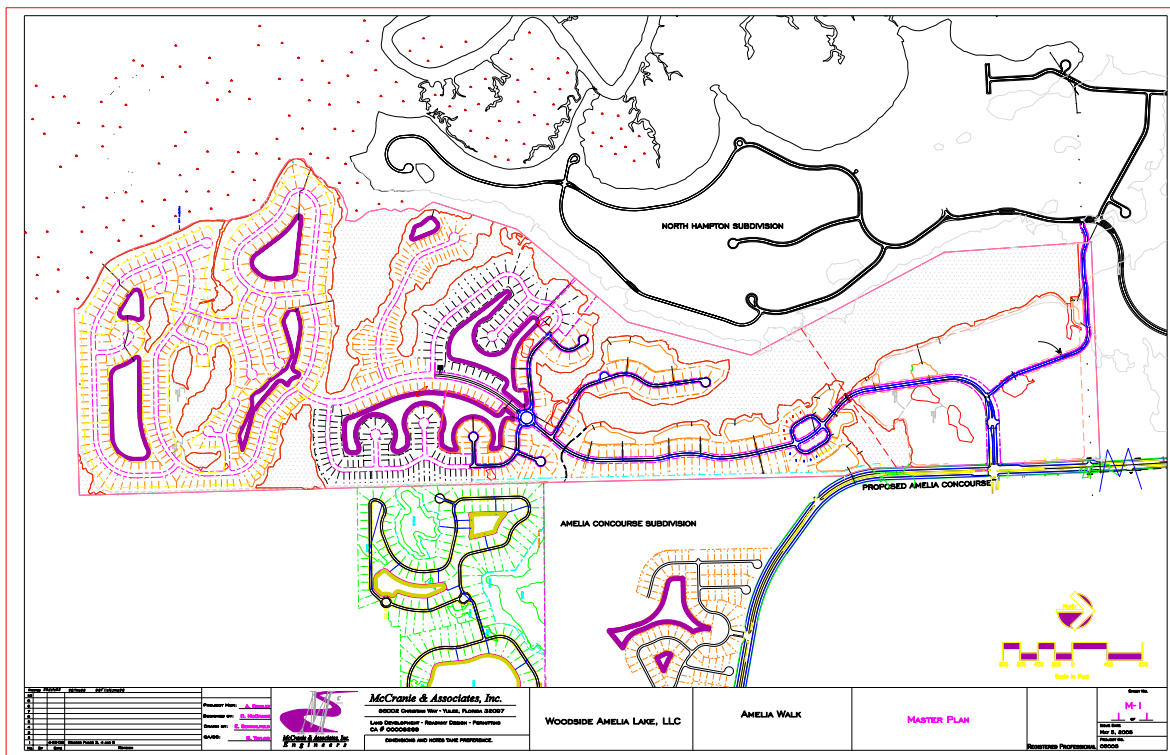
Services Provided: master planning, re-zoning, designing and preparing construction plans

Value: \$ 31,034,000

Start/Completion: 2004 - 2018



McCranie & Associates was selected to perform the master planning, re-zoning, designing and preparing construction plans for a 563 Acre Planned Unit Development. Responsibilities included master planning the entire development, re-zoning the property from Residential to PUD, design of roadway plan and profiles, lot layout and grading plan, Nassau County permitting, SJRWMD ERP permitting, DEP water and sewer permitting, and project coordination. The project is being developed in five phases and will ultimately have 749 homesites. McCranie & Associates also serves as the Community Development District Engineer.



# CIVIL

## Amelia Concourse Development - Yulee, Fl.

Client: Amelia Concourse Development

Services Provided: master planning, re-zoning, designing and preparing construction plans

Value: \$ 12,200,000

Start/Completion: 2004 - 2015



McCranie & Associates was selected to perform the master planning, re-zoning, designing and preparing construction plans for a 200 Acre residential development. Responsibilities included master planning the entire development, re-zoning the property from Residential to PUD, design of roadway plan and profiles, lot layout and grading plan, Nassau County permitting, SJRWMD ERP permitting, DEP water and sewer permitting, and project coordination. The project is being developed in three phases and will ultimately have 458 homesites. McCranie & Associates also serves as the Community Development District Engineer.

